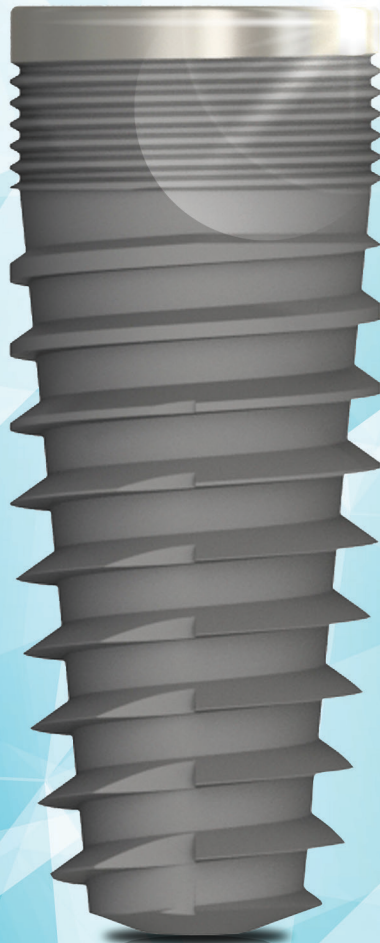


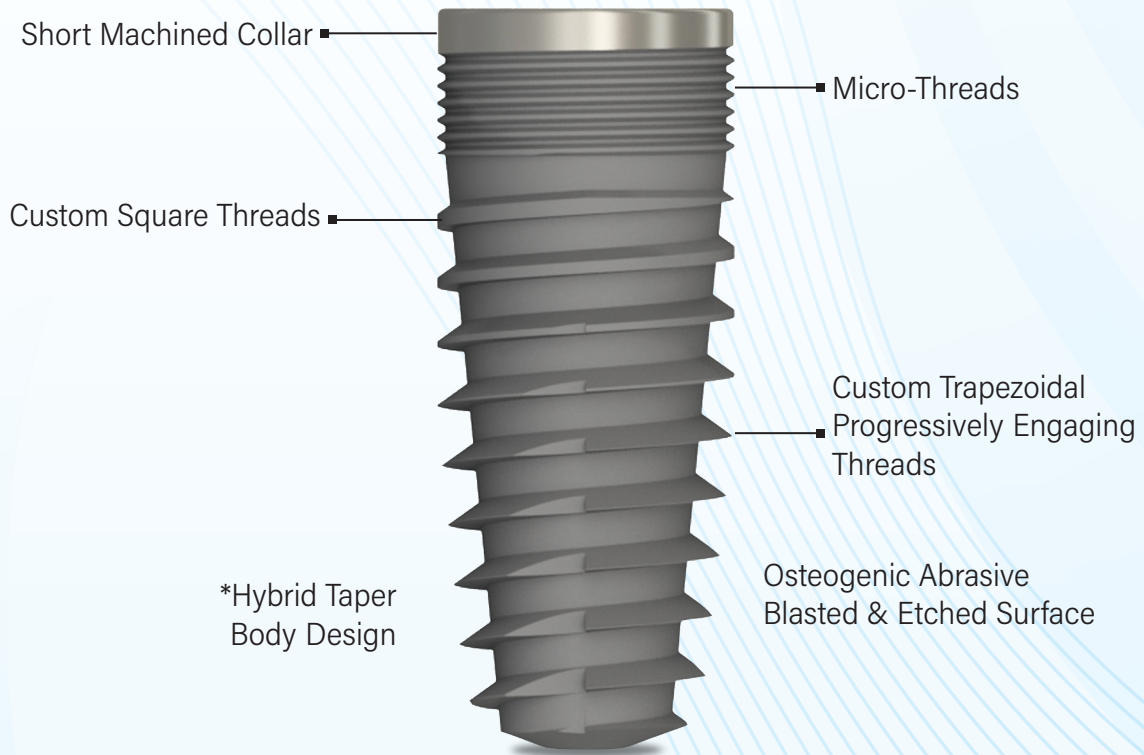
ReFirm[®]
Rooted in Trust



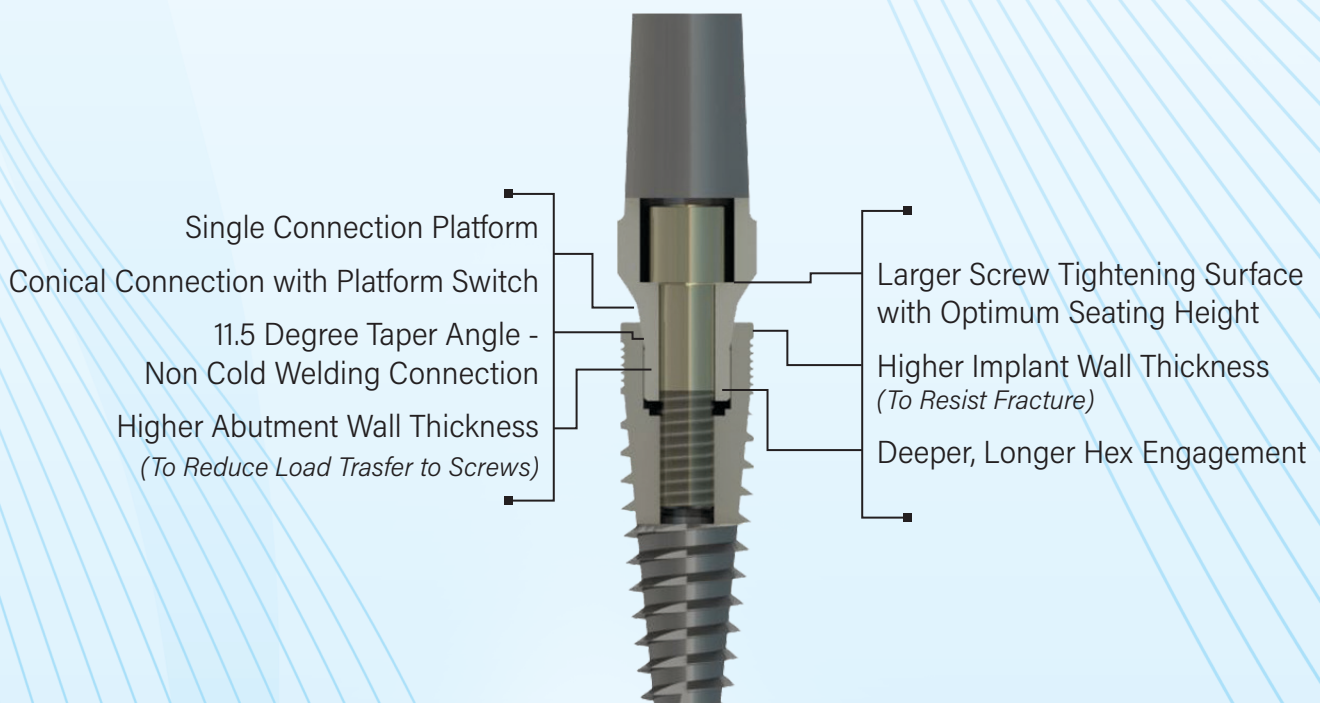
ENGINEERED
FOR CLINICAL
EXCELLENCE

ReFirm[®] Key Features

Rooted in Trust



High Strength Medical Grade Titanium (Grade 23 Titanium)





Titanium Grade 23

Medically compatible and proven grade. Titanium Grade 23 is 60% stronger than commonly used Grade 4 cp-Ti.

| | Grade 1 C Titanium | Grade 2 CP Titanium | Grade 3 CP Titanium | Grade 4 CP Titanium | Grade 23 Titanium |
|-------------------------|--------------------|---------------------|---------------------|---------------------|-------------------|
| Ultimate Strength (MPa) | 240 | 430 | 440 | 550 | 860 |
| Yield Strength (MPa) | 170-310 | 340 | 377-520 | 480-552 | 790 |

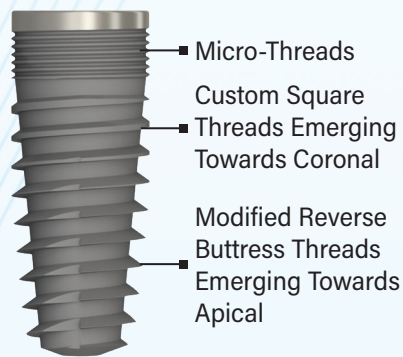
Progressively Engaging Thread Design

Custom Trapezoidal Progressively Engaging Thread with optimized pitch, flank angles and root to flank ratios.

Thread emergence depth and type varying across length from apical to Higher inter flank space for increased bone Implant contact.

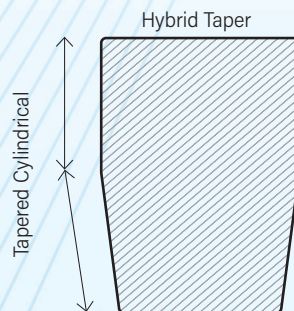
Optimized and uniform load transfer to the hard cortical and the soft cancellous bone.

Lower stress in the Implant bone interface, Implant abutment junction.



Average choices like V-thread, Buttress, Square, or similar threads have lower compressive load transfer and lower bone-implant contact.

Pure cylindrical is difficult to place and pure tapered has poor stability and load distribution.



Shape: Hybrid (Cylindrical & Tapered)

Good primary and secondary stability

Better load distribution between softer cancellous and harder cortical region within the jaw.

Better protection against biting overloads.

Doesn't compromise with lateral stability, due to cylindrical profile at the cortical region.

Abutment-Implant Connection Conical Hex

Lower micro movement between abutment and Implant.

Lesser loads on screw and reduced screw loosening possibility.

Tight Sealing at interface, lower micro-gaps and microleakages.

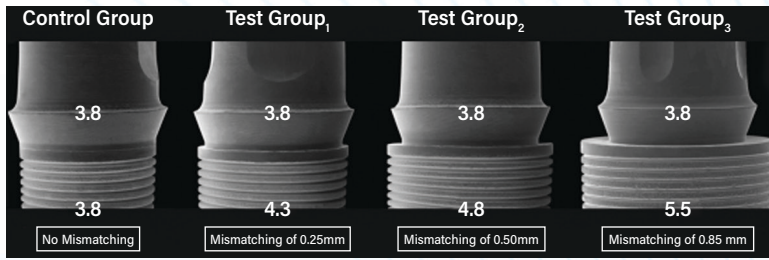
Longer Hex provides better load bearing area for lateral forces.

Better bone and soft tissue preservation.



Conical connection with adequate Implant, abutment thickness and deep engagement has better strength against lateral loads, better seating at implant abutment junction, and better resistance to micro-pumping effects.

A function of Abutment wall thickness, Implant wall thickness, Depth of Hex engagement, Length of Hex, Height of screw seating, Material choice, Cone taper angle.



Better marginal bone stability is seen with platform switched implants as compared to platform matched implants.

Canullo L, Fedele GR, Iannello G, Jepsen S. Platform switching and marginal bone-level alterations: the results of a randomized-controlled trial. Clin Oral Implants Res. 2010 Jan;21(1):115-21.

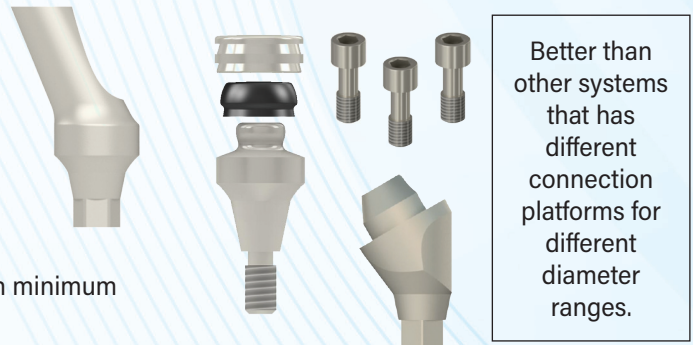
Variety and Versatility Along with Minimum Inventory

Wide variety of healing abutments and stock abutment choices at various gingival heights and emergence enables clinician to pick the right stock abutments for a variety of clinical cases. This is coupled with choice of angular abutments, multi-units and overdenture abutments.

All these are provided on **single connection platform** making it possible for the clinician to plan the prosthesis with minimum inventory and peace of mind.

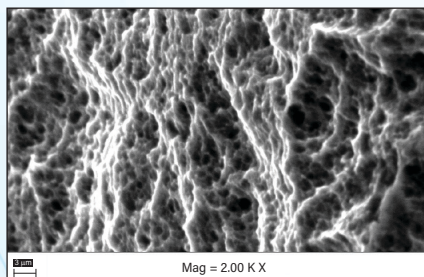
Open and closed tray coping with various heights are available for a seamless impression transfer.

For the digitally inclined, scan bodies of different heights along with digital analog, ensures a digital transfer of impression and prosthetic preparation.



Better than other systems that has different connection platforms for different diameter ranges.

Easy to plan prosthesis, wide variety, minimum inventory.



Surface Characterization

The micro surface treatment that includes abrasive blasting and acid etching on the machined titanium implants, are designed to achieve excellent osseointegration of the implants.

Easy Implant Pick and Convey to the Site

Unique Implant Packaging and instrumentation that makes it easy to convey to the site.

Easy Pick, place and drive with "Flex Grip" drivers without any need for mounts.

'Assure' drivers that will retain connection between implant and driver at all times while placing in critical areas (sinus, pterygoid etc.).

Armamentarium kit in different sizes based on instrumentation needs of clinician.



Clinically Proven Performance

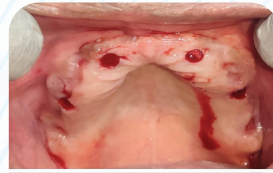
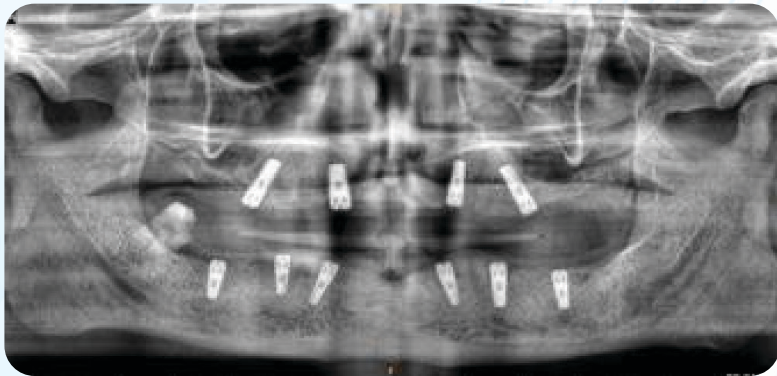
Through a Pan India multi-centric clinical study at 9 institutes across the country over two years, a first of its kind in India, the product performance is fully validated.

Key findings

- Easy to Place
- Good primary and secondary stability
- Good Marginal bone preservation
- Global equivalence in Implant success rates

Thousands of Implants in use successfully across India.

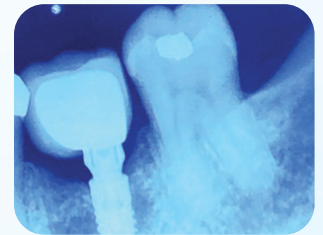
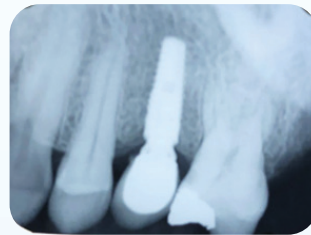
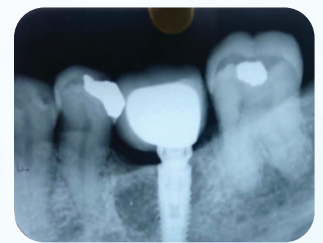
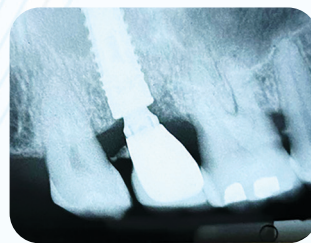
Full Arch Implant Prosthesis



2 Implant Overdenture



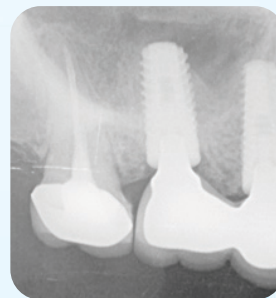
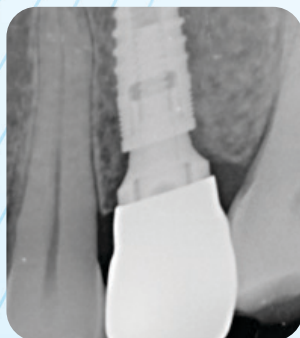
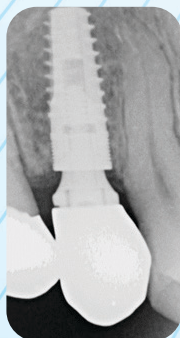
Single Implant
Fixed Prosthesis



Screw Retained
Implant Prosthesis
(1 year follow-up)

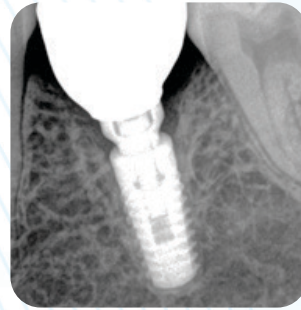
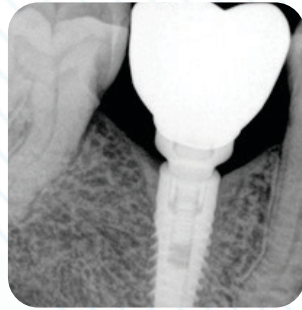


Single Implant Fixed Prosthesis
(1.5 years follow-up)



Single Implant Fixed Prosthesis

Fixed Implant Prosthesis
(3 years follow-up)



Stable Bone Levels

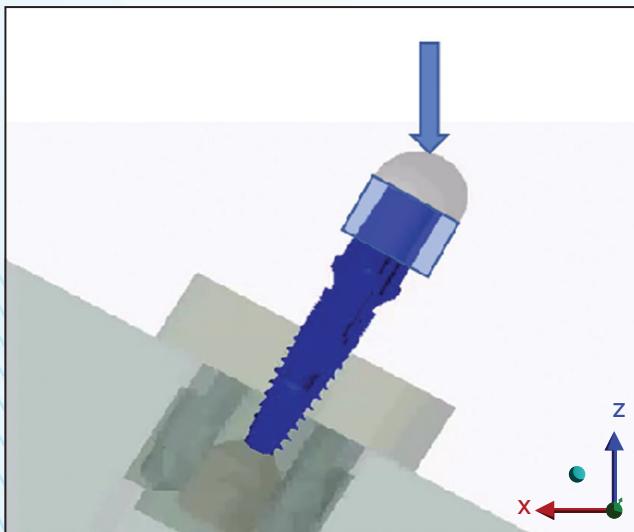
1.5 Years Follow Up



Fixed Implant Prosthesis

FEA Analysis

Stress Map In Worst Case Condition



Finite Element Analysis in Worst Case Condition

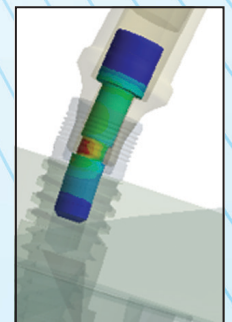
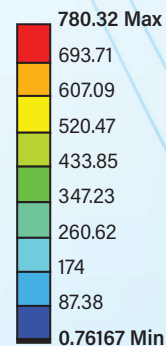
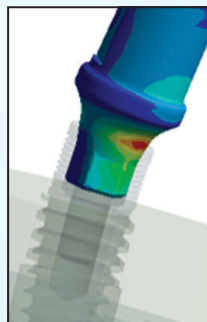
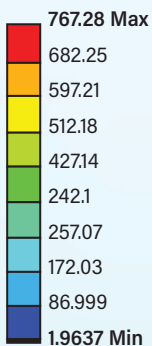
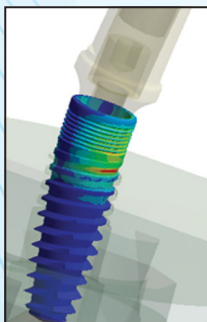
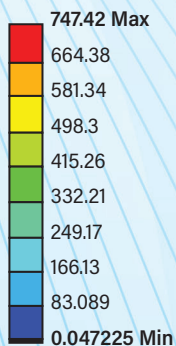
Bending Loads with 3 mm Supra-Crestal Overhang

Peak stresses well within the material strength of Grade 23 Titanium

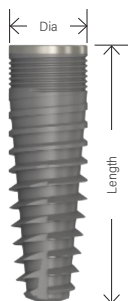
Stress zones are away from critical cortical bone-Implant junction

Load well dissipated amongst component interfaces

Results predictive of long-term success



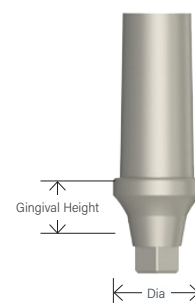
○ IMPLANT



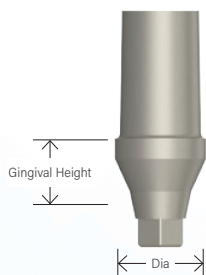
| Length (mm) | Diameter (mm) | | | | |
|-------------|---------------|--------------|--------------|--------------|--------------|
| | Ø 3.5 | Ø 4.0 | Ø 4.5 | Ø 5.0 | Ø 5.50 |
| 8.5 | 11R-IM-XR001 | 11R-IM-XR006 | 11R-IM-XR011 | 11R-IM-XR016 | 11R-IM-XR021 |
| 10 | 11R-IM-XR002 | 11R-IM-XR007 | 11R-IM-XR012 | 11R-IM-XR017 | 11R-IM-XR022 |
| 11.5 | 11R-IM-XR003 | 11R-IM-XR008 | 11R-IM-XR013 | 11R-IM-XR018 | 11R-IM-XR023 |
| 13 | 11R-IM-XR004 | 11R-IM-XR009 | 11R-IM-XR014 | 11R-IM-XR019 | 11R-IM-XR024 |
| 15 | 11R-IM-XR005 | 11R-IM-XR010 | 11R-IM-XR015 | 11R-IM-XR020 | |

○ STRAIGHT ABUTMENT

| Gingival Height (mm) | Diameter (mm) | | | | |
|----------------------|---------------|--------------|--------------|--------------|--------------|
| | Ø 3.8 | Ø 4.2 | Ø 4.5 | Ø 5.2 | Ø 5.7 |
| 1.2 | 11R-AS-XR019 | 11R-AS-XR017 | 11R-AS-XR018 | 11R-AS-XR022 | |
| 2.2 | 11R-AS-XR020 | 11R-AS-XR001 | 11R-AS-XR002 | 11R-AS-XR003 | 11R-AS-XR004 |
| 3.0 | 11R-AS-XR016 | 11R-AS-XR006 | 11R-AS-XR007 | 11R-AS-XR008 | 11R-AS-XR009 |
| 4.0 | 11R-AS-XR021 | 11R-AS-XR011 | 11R-AS-XR012 | 11R-AS-XR013 | 11R-AS-XR014 |



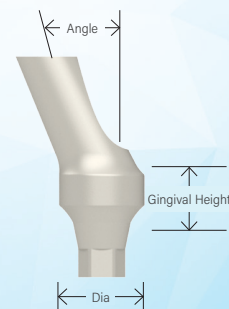
○ ST. ABUTMENT SUBCRESTAL



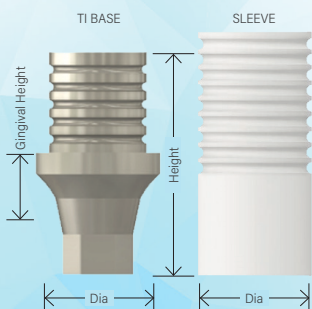
| Gingival Height (mm) | Diameter (mm) | | |
|----------------------|---------------|--------------|--------------|
| | Ø 3.8 | Ø 4.2 | Ø 4.5 |
| 3.0 | 11R-AS-XR027 | 11R-AS-XR025 | 11R-AS-XR023 |
| 4.0 | | 11R-AS-XR026 | 11R-AS-XR024 |

○ ANGULAR ABUTMENT

| Product Code | 11R-AA-XR001 | 11R-AA-XR002 |
|----------------------|--------------|--------------|
| Angle (degree) | 15 | 25 |
| Gingival Height (mm) | 3.0 | 3.0 |
| Dia (mm) | Ø 4.5 | Ø 4.5 |

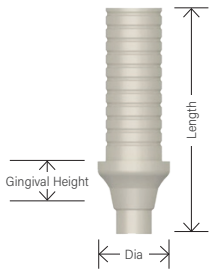


○ CASTABLE ABUTMENT



| Product Code | Description | Length (mm) | Diameter (mm) | Gingival Height (mm) |
|--------------|------------------------------|-------------|---------------|----------------------|
| 11R-AC-XR001 | Ti base with Hex with Sleeve | 8.3 | Ø 4.5 | 2.2 |
| 11R-AC-XR002 | Fully Castable with Hex | 11.5 | Ø 4.5 | 2.2 |
| 11R-AC-XR004 | Fully Castable without Hex | 11.5 | Ø 4.5 | 2.2 |

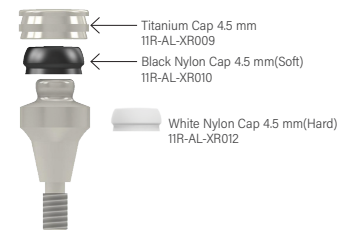
○ Ti BASE TEMPORARY ABUTMENT



| Product Code | Description | Length (mm) | Diameter (mm) | Gingival Height (mm) |
|--------------|---------------------|-------------|---------------|----------------------|
| 11R-AC-XR006 | Ti base without Hex | 14 | Ø 4.5 | 2.2 |

○ OVERDENTURE ABUTMENT (LOCATOR)

| Gingival Height (mm) | Ø 4.5 |
|----------------------|---|
| 2.2 | 11R-AL-XR011 - Locator Abutment(GH2.2*CD 4.5) |
| 3.0 | 11R-AL-XR005 - Locator Abutment(GH3.0*CD4.5) |
| 4.0 | 11R-AL-XR006 -Locator Abutment(GH4.0*CD4.5) |



○ ABUTMENT LOCKING SCREW



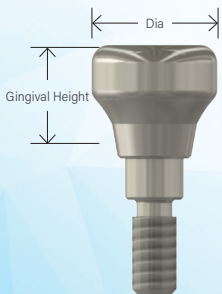
| Product Code |
|--------------|
| 11R-SL-XR001 |

HEALING / COVER SCREW ○



| Product Code |
|--------------|
| 11R-SH-XR001 |

○ HEALING ABUTMENT / GINGIVAL FORMER



| Gingival Height (mm) | Diameter (mm) | | | |
|----------------------|---------------|--------------|--------------|--------------|
| | Ø 3.8 | Ø 4.2 | Ø 4.5 | Ø 5.2 |
| 2.2 | 11R-AH-XR030 | 11R-AH-XR001 | 11R-AH-XR004 | 11R-AH-XR007 |
| 3.0 | 11R-AH-XR031 | 11R-AH-XR002 | 11R-AH-XR005 | 11R-AH-XR008 |
| 4.0 | 11R-AH-XR032 | 11R-AH-XR003 | 11R-AH-XR006 | 11R-AH-XR009 |
| 5.0 | | 11R-AH-XR016 | 11R-AH-XR018 | 11R-AH-XR020 |
| 6.0 | | 11R-AH-XR017 | 11R-AH-XR019 | 11R-AH-XR021 |

○ HEALING ABUTMENT / GINGIVAL FORMER - SUB CRESTAL

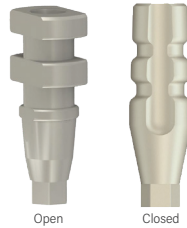
| Gingival Height (mm) | Diameter (mm) | | |
|----------------------|---------------|--------------|--------------|
| | Ø 4.2 | Ø 4.5 | Ø 5.2 |
| 3.0 | 11R-AH-XR027 | 11R-AH-XR025 | 11R-AH-XR029 |
| 4.0 | 11R-AH-XR028 | | |



IMPLANT ANALOG



| Product Code |
|--------------|
| 11R-LA-XR001 |



Open

Closed

IMPRESSION COPING

| Product Code | Description |
|--------------|---|
| 11R-LC-XR009 | Impression Coping - Open Tray - Short |
| 11R-LC-XR013 | Impression Coping - Open Tray - Long |
| 11R-LC-XR007 | Impression Coping - Closed Tray - Short |
| 11R-LC-XR010 | Impression Coping - Closed Tray - Long |

COPING SCREWS



| Product Code | Description |
|--------------|--------------------------|
| 11R-LC-S001 | Closed Tray Screw - Long |



| Product Code | Description |
|--------------|---------------------------|
| 11R-LC-S005 | Closed Tray Screw - Short |

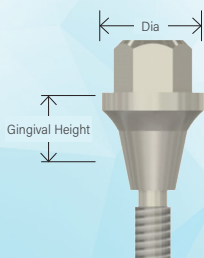


| Product Code | Description |
|--------------|------------------------|
| 11R-LC-S006 | Open Tray Screw - Long |



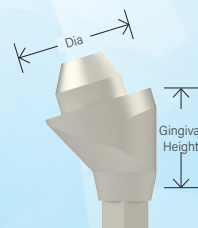
| Product Code | Description |
|--------------|-------------------------|
| 11R-LC-S002 | Open Tray Screw - Short |

STRAIGHT MULTI-UNIT



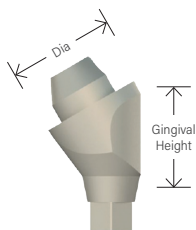
| Gingival Height (mm) | Dia (mm) |
|----------------------|--------------|
| | Ø 4.5 |
| 2.2 | 11R-MS-XR004 |
| 3.0 | 11R-MS-XR005 |
| 4.0 | 11R-MS-XR006 |

17° ANGULAR MULTI-UNIT



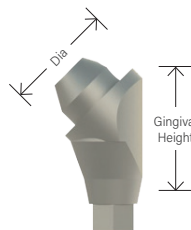
| Gingival Height (mm) | Dia (mm) |
|----------------------|--------------|
| | Ø 5.2 |
| 2.5 | 11R-MA-XR011 |
| 3.5 | 11R-MA-XR015 |
| 4.5 | 11R-MA-XR012 |
| 5.5 | 11R-MA-XR016 |

30° ANGULAR MULTI-UNIT



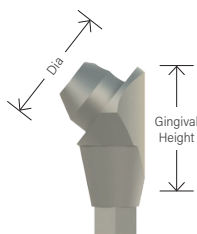
| Gingival Height (mm) | Dia (mm) |
|----------------------|--------------|
| | |
| 3.5 | 11R-MA-XR017 |
| 4.5 | 11R-MA-XR014 |
| 5.5 | 11R-MA-XR018 |

45° ANGULAR MULTI-UNIT



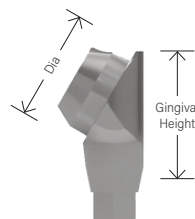
| Gingival Height (mm) | Dia (mm) |
|----------------------|--------------|
| | |
| 5.5 | 11R-MA-XR019 |
| 6.5 | 11R-MA-XR020 |

52° ANGULAR MULTI-UNIT



| Gingival Height (mm) | Dia (mm) |
|----------------------|--------------|
| | |
| 4.5 | 11R-MA-XR021 |
| 5.5 | 11R-MA-XR022 |
| 6.5 | 11R-MA-XR023 |

60° ANGULAR MULTI-UNIT



| Gingival Height (mm) | Dia (mm) |
|----------------------|----------------|
| | |
| 6.5 | 11R - MA-XR024 |

MULTI-UNIT TI CYLINDER



| Multi-Unit Abutment | Dia (mm) | Multi-unit Ti Cylinder | Multi-unit Fully Castable Cylinder |
|---------------------------|-------------|---------------------------|------------------------------------|
| | | Product Code | Product Code |
| For Straight MU | Ø 4.5/Ø 5.2 | 11R-AL-XR001/11R-AL-XR015 | 11R-AL-XR008/11R-AL-XR016 |
| For 17°, 30°, 45°, 52° MU | Ø 5.2 | 11R-AL-XR015 | 11R-AL-XR016 |
| For 60° Multi-Unit | Ø 5.5 | 11R-AL-XR002 | 11R-AL-XR013 |



MULTI-UNIT HEALING CAP

| Multi-Unit Abutment | Dia (mm) | Product Code |
|---------------------------|---------------|---------------------------|
| For Straight MU | Ø 4.5 / Ø 5.2 | 11R-MA-HR002/11R-MA-HR004 |
| For 17°, 30°, 45°, 52° MU | Ø 5.2 | 11R-MA-HR004 |
| For 60° Multi-Unit | Ø 5.5 | 11R-MA-XR003 |



MULTI-UNIT PROSTHETIC SCREW



| Product Code |
|--------------|
| 11R-SL-MR001 |

MULTI-UNIT ABUTMENT SCREW



| Product Code |
|--------------|
| 11R-SL-MR002 |

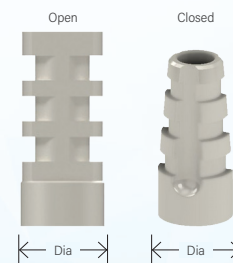
MULTI-UNIT ANALOG

| Multi-Unit Abutment | Dia (mm) | Product Code |
|--|---------------|------------------------------|
| For Straight MU, 17°, 30°, 45°, 52° MU | Ø 4.5 / Ø 5.2 | 11R-LA-XR002 or 11R-DG-XR011 |
| For 60° Multi-Unit | Ø 5.5 | 11R-LA-XR003 or 11R-DG-XR012 |



MULTI-UNIT (MU) IMPRESSION COPING

| Multi-Unit Abutment | Dia (mm) | MU Impression Coping Open Tray | MU Impression Coping Closed Tray |
|--|--------------|--------------------------------|----------------------------------|
| | | Product Code | Product Code |
| For Straight MU, 17°, 30°, 45°, 52° MU | Ø 4.5/ Ø 5.2 | 11R-LC-XR002 | 11R-LC-XR004 |
| For Straight MU, 17°, 30°, 45°, 52° MU | Ø 5.2 | 11R-LC-XR002 | 11R-LC-XR012 |
| For 60° Multi-Unit | Ø 5.5 | | 11R-LC-XR005 |



MU - IMPRESSION COPING SCREW OPEN TRAY



| Product Code |
|--------------|
| 11R-LC-S003 |

MU - IMPRESSION COPING SCREW CLOSED TRAY



| Product Code |
|--------------|
| 11R-LC-S004 |

DIGITAL SCAN BODY

| Types | Dia (mm) | |
|-------|--------------|--------------|
| | Ø 3.8 | Ø 4.5 |
| Short | 11R-DG-XR007 | 11R-DG-XR003 |
| Long | 11R-DG-XR008 | 11R-DG-XR006 |



← Dia →

| Description | Product Code |
|-------------------------|--------------|
| Scan Body Locking Screw | 11R-SL-XR002 |



| Description | Product Code |
|----------------|--------------|
| Digital Analog | 11R-DG-XR002 |



| Description | Product Code |
|-----------------|--------------|
| Retention Screw | 11R-RS-XR001 |



MULTI-UNIT DIGITAL SCAN BODY

| Multi-Unit Abutment | Dia (mm) | Product Code |
|--|---------------|--------------|
| For Straight MU, 17°, 30°, 45°, 52° MU | Ø 4.0 - Short | 11R-DG-XR010 |
| | Ø 4.0 - Long | 11R-DG-XR009 |
| For 60° Multi-Unit | Ø 5.2 - Short | 11R-DG-XR014 |
| | Ø 5.2 - Long | 11R-DG-XR013 |



← Dia 4.0 →



← Dia 5.2 →

MULTI-UNIT DIGITAL ANALOG

| Multi-Unit Abutment | Product Code |
|--|--------------|
| For Straight MU, 17°, 30°, 45°, 52° MU | 11R-DG-XR011 |
| For 60° Multi-Unit | 11R-DG-XR012 |



| Description | Product Code |
|-----------------------------|--------------|
| Multi-Unit Prosthetic Screw | 11R-SL-MR001 |



| Description | Product Code |
|-----------------|--------------|
| Retention Screw | 11R-RS-XR001 |



Ti BASE WITH HEX

| Gingival Height (mm) | Dia (mm) | | |
|----------------------|--------------|--------------|--------------|
| | Ø 3.8 | Ø 4.2 | Ø 4.5 |
| 1.2 | | 11R-AT-XR004 | 11R-AT-XR008 |
| 2.2 | 11R-AT-XR001 | 11R-AT-XR005 | 11R-AT-XR009 |
| 3.0 | 11R-AT-XR002 | 11R-AT-XR006 | 11R-AT-XR010 |
| 4.0 | 11R-AT-XR003 | 11R-AT-XR007 | 11R-AT-XR011 |



↑
Gingival Height
↓

← Dia →

Ti BASE WITHOUT HEX



← Dia →

| Gingival Height (mm) | Dia (mm) | | |
|----------------------|--------------|--------------|--------------|
| | Ø 3.8 | Ø 4.2 | Ø 4.5 |
| 1.2 | | 11R-AT-XR015 | 11R-AT-XR019 |
| 2.2 | 11R-AT-XR012 | 11R-AT-XR016 | 11R-AT-XR020 |
| 3.0 | 11R-AT-XR013 | 11R-AT-XR017 | 11R-AT-XR021 |
| 4.0 | 11R-AT-XR014 | 11R-AT-XR018 | 11R-AT-XR022 |

○ REFIRM SURGICAL KIT ELITE

Product Code
11R-TK-XR001



REFIRM SURGICAL KIT COMPACT ○

Product Code
11R-TK-XR002



○ REFIRM SURGICAL KIT PRIME

Product Code
11R-TK-XR003



○ DRILLS

| Description | Product Code | Diameter (mm) |
|-------------------|----------------|---------------|
| Lance Drill | 11R-TD-XR001-A | - |
| Pilot Drill | 11R-TD-XR002-A | Ø 2.0 |
| Drill | 11R-TD-XR003-A | Ø 2.5 |
| Taper Form Drill | 11R-TD-XR004-A | Ø 2.9 |
| Taper Form Drill | 11R-TD-XR005-A | Ø 3.4 |
| Taper Form Drill | 11R-TD-XR006-A | Ø 3.9 |
| Taper Form Drill | 11R-TD-XR007-A | Ø 4.4 |
| Taper Form Drill | 11R-TD-XR008-A | Ø 4.9 |
| Countersink Drill | 11R-TD-XR009 | Ø 3.2/2.9 |
| Countersink Drill | 11R-TD-XR010 | Ø 3.7/3.4 |
| Countersink Drill | 11R-TD-XR011 | Ø 4.2/3.9 |
| Countersink Drill | 11R-TD-XR012 | Ø 4.7/4.4 |
| Countersink Drill | 11R-TD-XR013 | Ø 5.3/4.9 |



○ STOPPERS

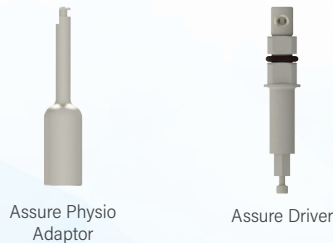
| Implant Length (mm) | For Drill Ø 2.0 to Ø 3.4 |
|---------------------|-----------------------------|
| 8.5 | 11R-TS-XR001 |
| 10.0 | 11R-TS-XR002 |
| 11.5 | 11R-TS-XR003 |
| 13.0 | 11R-TS-XR004 |
| 15.0 | 11R-TS-XR005 |



| Implant Length (mm) | For Drill Ø 3.9 to Ø 4.9 |
|---------------------|-----------------------------|
| 8.5 | 11R-TS-XR006 |
| 10.0 | 11R-TS-XR007 |
| 11.5 | 11R-TS-XR008 |
| 13.0 | 11R-TS-XR009 |
| 15.0 | 11R-TS-XR010 |

○ IMPLANT DRIVER-ASSURE SERIES

| Description | Product Code |
|--------------------------------------|--------------|
| Implant driver-Assure Physio Adaptor | 11R-TR-XR027 |
| Implant driver-Assure-Short | 11R-TR-XR020 |
| Implant driver-Assure-Long | 11R-TR-XR021 |

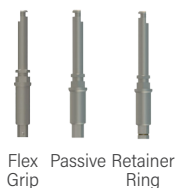


○ PARALLELING PIN

| Dia (mm) | Product Code |
|-------------|--------------|
| Ø 2.0 / 2.5 | 11R-TP-XR001 |
| Ø 2.5 / 2.9 | 11R-TP-XR002 |
| Ø 2.9 / 2.0 | 11R-TP-XR003 |



HAND PIECE (HP) IMPLANT DRIVER



| Types | Product Code | | |
|-------|--------------|--------------|--------------|
| | Flex Grip | Passive | Ring |
| Short | 11R-TH-XR005 | 11R-TH-XR007 | 11R-TH-XR001 |
| Long | 11R-TH-XR006 | 11R-TH-XR008 | 11R-TH-XR002 |

IMPLANT RATCHET DRIVER SQ - HEAD(4X4)



| Types | Product Code | | |
|-------|--------------|--------------|--------------|
| | Flex Grip | Passive | Ring |
| Short | 11R-TR-XR025 | 11R-TR-XR030 | 11R-TR-XR015 |
| Long | 11R-TR-XR026 | 11R-TR-XR031 | 11R-TR-XR016 |

CONTRA - ANGLE CONNECTOR - SQ HEAD FOR RATCHET

| Product Code |
|--------------|
| 11R-TR-XR029 |



(Can be used for straight multi-unit tightening)

DRILL EXTENDER

| Product Code |
|--------------|
| 11R-TX-XR001 |



FIXTURE DIRECTION PIN

| Product Code |
|--------------|
| 11R-TP-XR004 |



RATCHET ADAPTOR (4x4)

| Product Code |
|--------------|
| 11R-TR-XR022 |



DEPTH MARKER

| Dia (mm) | Product Code |
|----------|--------------|
| Ø 2.0 | 11R-TG-XR001 |
| Ø 2.5 | 11R-TG-XR002 |



1.25 HEX DRIVER WITH - SQ - HEAD (4x4)

| Length (mm) | Product Code |
|---------------|--------------|
| Short - 17 mm | 11R-TR-XR018 |
| Long - 23 mm | 11R-TR-XR019 |
| Long - 27 mm | 11R-TR-XR028 |



Note : To be used with Ratchet adaptor for hand tightening

TORQUE WRENCH

| Settable Spring | |
|-------------------------------------|--------------|
| Description | Product Code |
| With integrated Ratchet adaptor 4X4 | 11R-TW-XR027 |

Note : Range 15-45 Ncm



| Lever Type | |
|-------------------------------------|--------------|
| Description | Product Code |
| With integrated Ratchet adaptor 4X4 | 11R-TW-XR026 |

Note : Range 15-50 Ncm





Made from superior medical Grade 23 Titanium, incorporating the most recent advances in the field and novel features, Refirm® dental Implants are developed for market leading performance in ease of placement and stability. These implants are backed by years of research and testing. It is clinically validated for long-term success. This Implant system along with the complete set of associated instruments and armamentarium are designed and made in India with passion and pride. With a design that focuses on optimizing variety, a responsive supply chain, this offering is centered on winning dentists confidence and patient comfort.

Manufactured by

Int-essence
Solutions Pvt. Ltd.

License Number: MFG/MD/2020/000134

167/1, 3rd Cross, 1st Stage, Peenya Industrial Estate,
Bangalore - 560058, Karnataka, India

Email: info@intessence.in

Website: www.intessence.in

MSME-UDYAM Registration No.: UDYAM-KR-03-0075081

Customer Care Number: +91 80 4170 5021, +91 7975246070

